

# COMUNE DI CARPINO

INTERVENTI PROPOSTI PER LA  
RIDUZIONE DEL RISCHIO SISMICO  
PALAZZO BARONE

PROGETTO ESECUTIVO

PIANTE E PARTICOLARI

Progettisti: Galderisi e DALLI  
Dott. Ing. Alberto MACCARONE

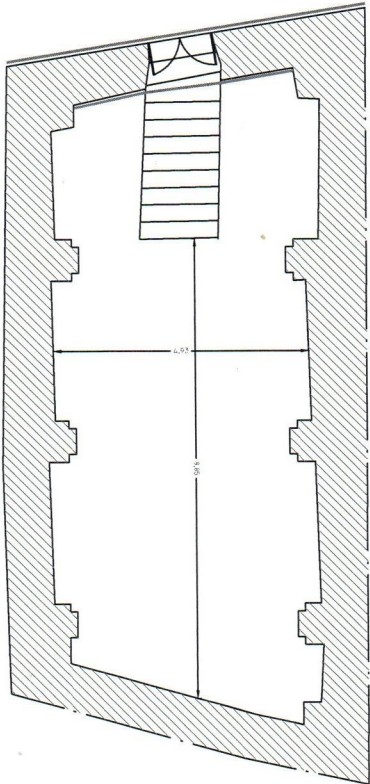
SPAZIO PER DIMENSIONI

MATERIALI	DESCRIZIONE	QUANTITÀ	UNITÀ
MURATURA A CONCI DI PIETRA	10.000	m <sup>3</sup>	
MURATURA A SACCO CONSOLIDATA	10.000	m <sup>3</sup>	
INIEZIONI DI BOIACCA	10.000	m <sup>3</sup>	
GEOSTEEL GRID 400	10.000	m <sup>2</sup>	

1/50

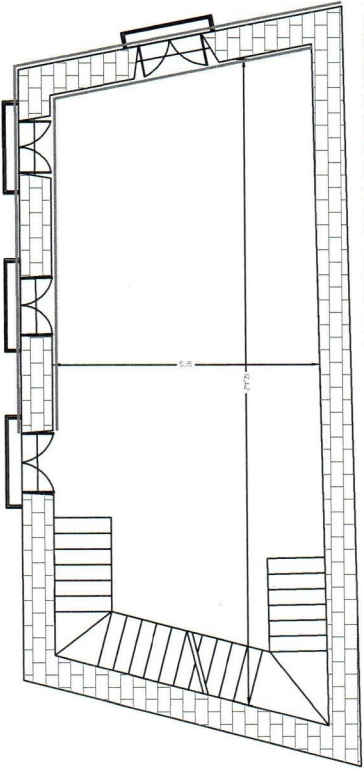
PIANTA PIANO SEMINTERRATO

MURATURA IN PIETRAME A SACCO CONSOLIDATA CON INIEZIONI DI BOIACCA



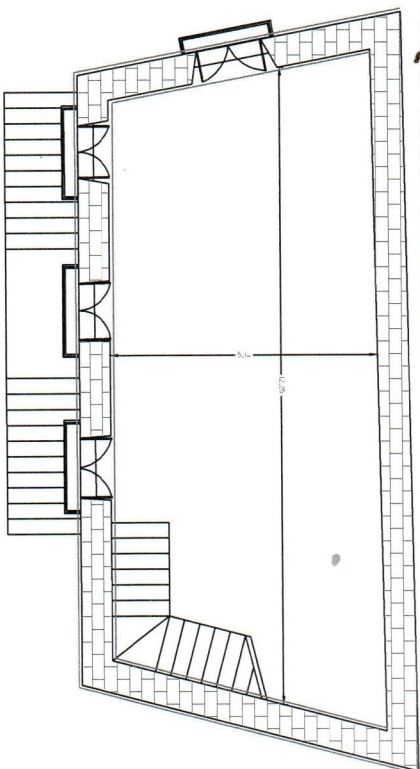
PIANTA PIANO PRIMO

MURATURA A CONCI DI PIETRA TENERA TUFO



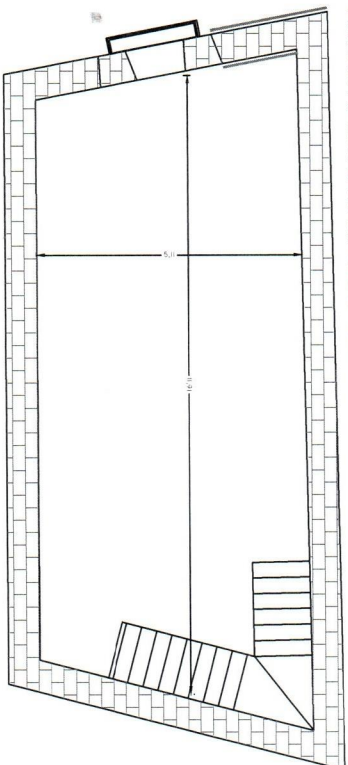
PIANTA PIANO RIALZATO

MURATURA A CONCI DI PIETRA TENERA TUFO



PIANTA PIANO SOTTOTETTO

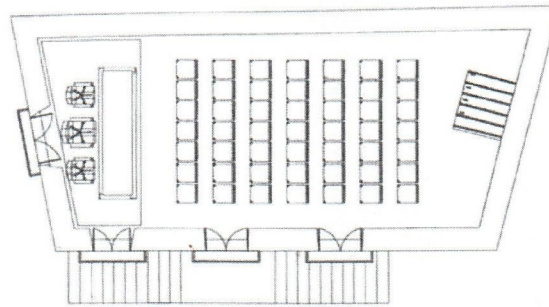
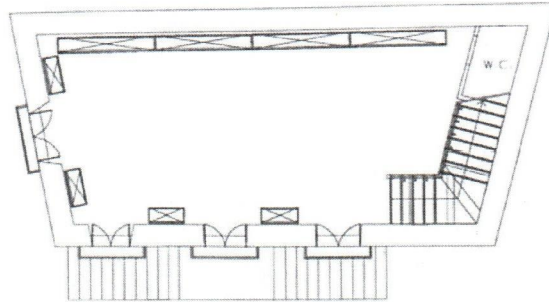
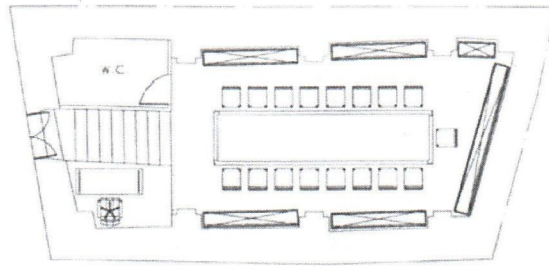
MURATURA A CONCI DI PIETRA TENERA TUFO



## LEGENDA

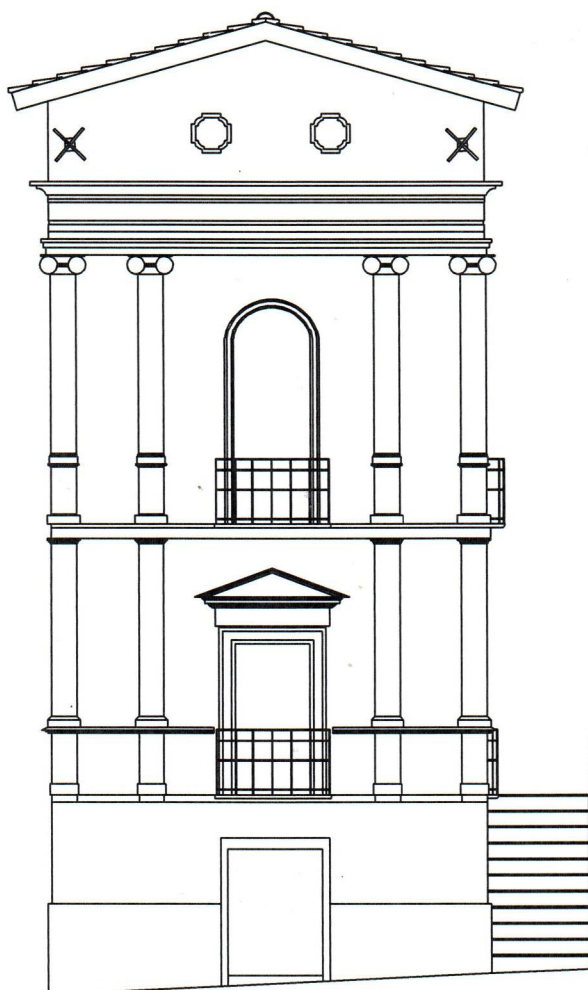
APPLICAZIONE RINFORZO A  
FLESSIONE E TAGLIO DEL  
MASCHIO MURARIO TRAMITE  
GEOSTEEL GRID 400

A-A

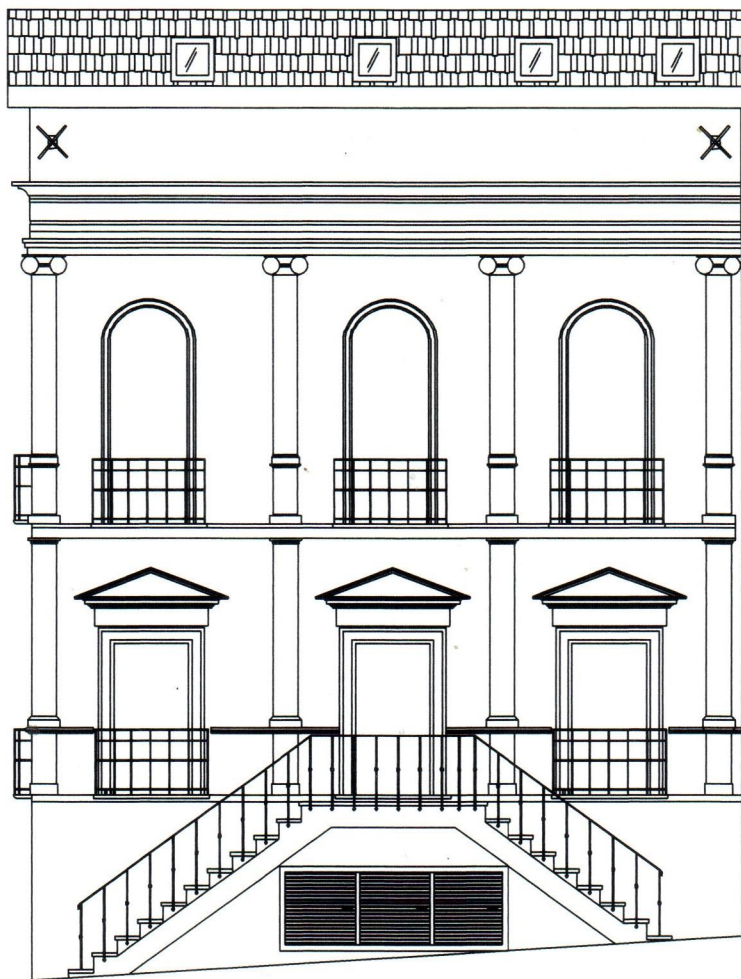


*Piano di recupero, fruizione e valorizzazione del Palazzo Barone di Carpino*

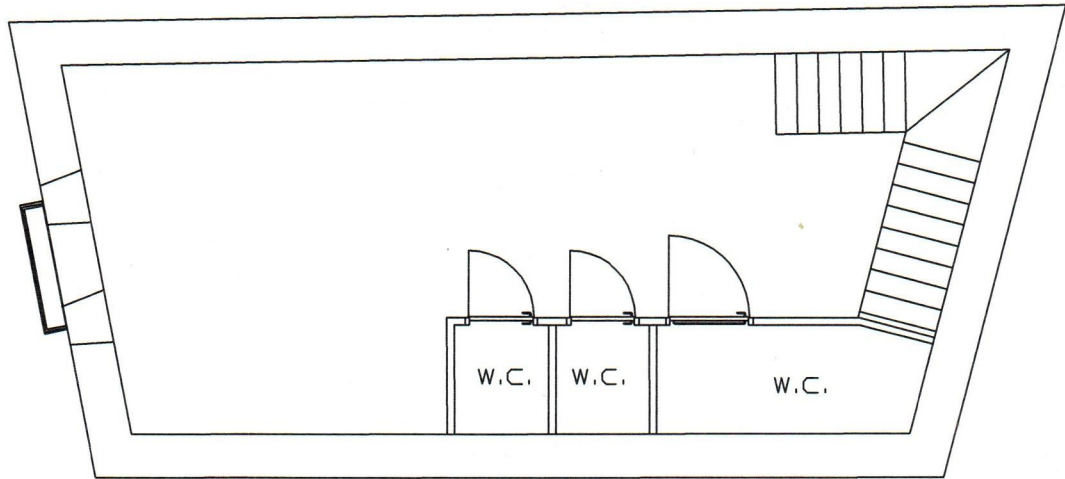
PROSPETTO FRONTALE



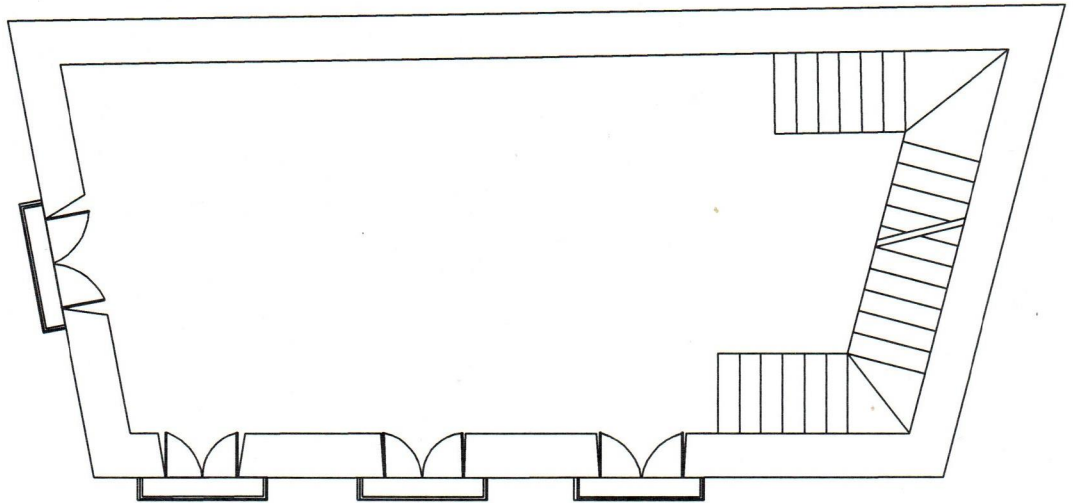
PROSPETTO LATERALE



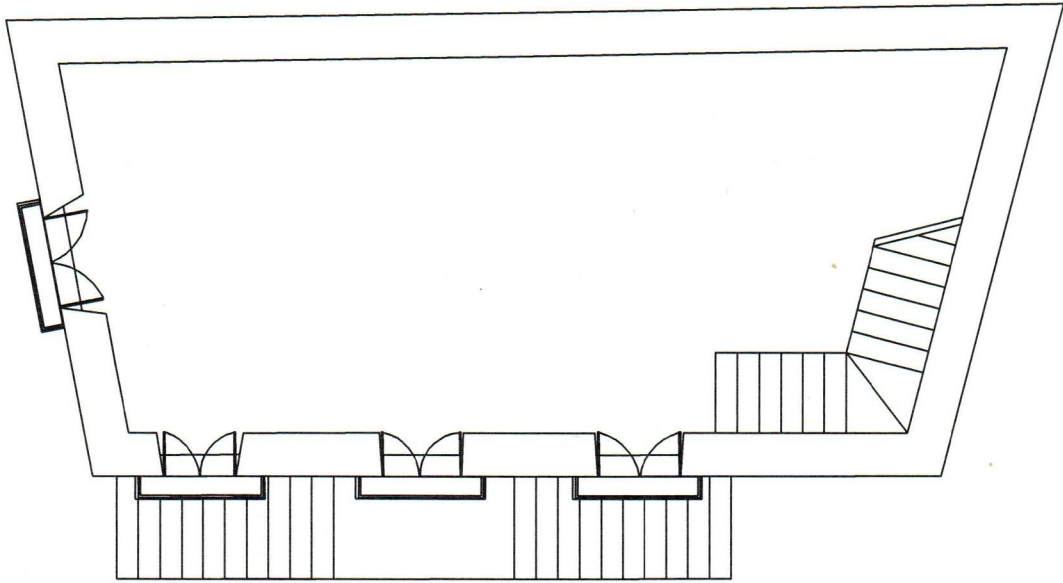
PIANTA PIANO SOTTOTETTO



PIANTA PIANO PRIMO



PIANTA PIANO RIALZATO



PIANTA PIANO SEMINTERRATO

