

PALAZZINA VIA MURGE

PIANTA PIANO TERRA



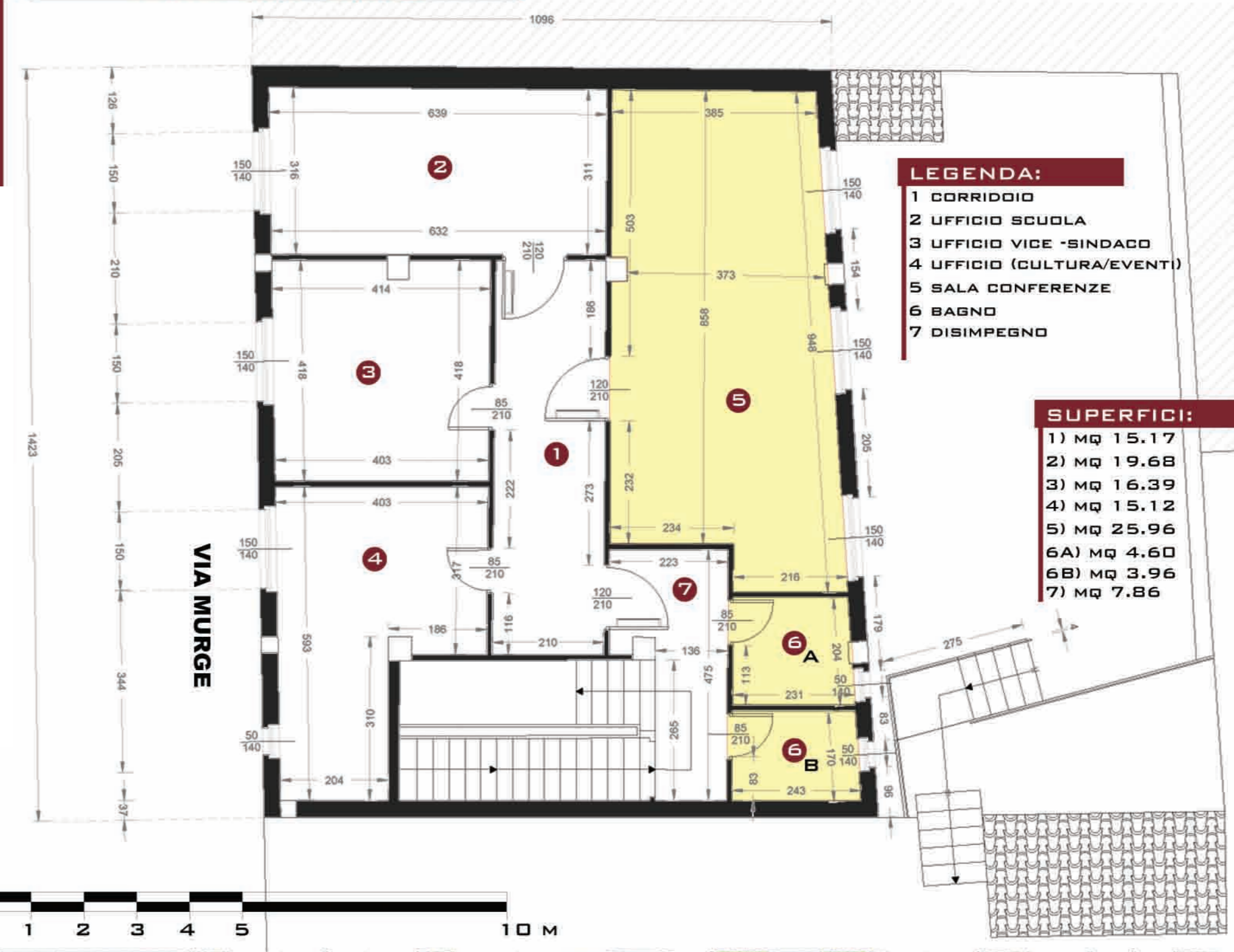
LEGENDA:

- 3 ANTIBAGNO
- 4 BAGNO
- 10 CENTRALE POMPAGGIO ANTINCENDIO
- 11 VANO CALDAIA
- 12 CORTILE
- 13 DEPOSITO
- 14 CORRIDOIO
- 15 UFFICIO/LETTURA
- 16 ARCHIVIO STORICO

SUPERFICI:

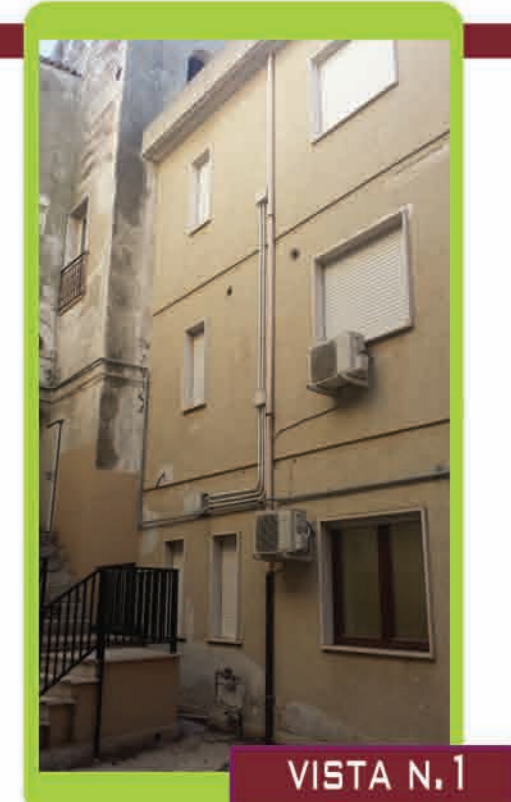
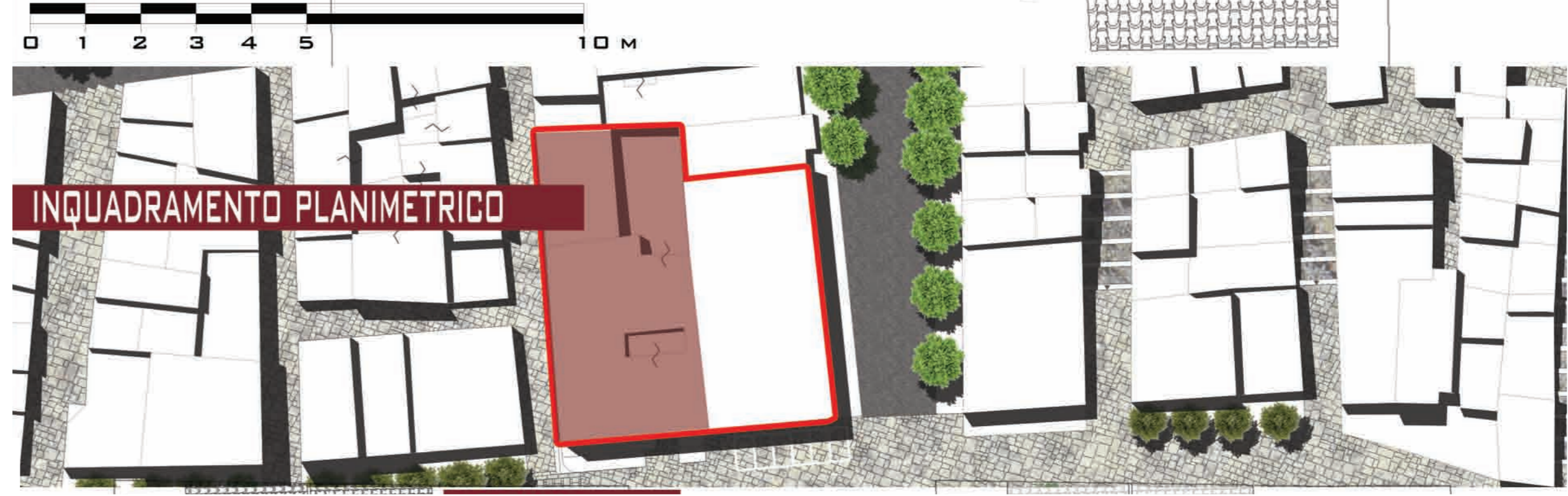
- 3B) MQ 3.67
- 4C) MQ 6.07
- 4D) MQ 4.11
- 4E) MQ 3.33
- 10) MQ 16.48
- 11) MQ 2.41
- 12) MQ 93.49
- 13) MQ 3.23
- 14) MQ 16.13
- 15) MQ 10.72
- 16) MQ 82.57

PIANTA PRIMO PIANO



- LEGENDA:**
- 1 CORRIDOIO
 - 2 UFFICIO SCUOLA
 - 3 UFFICIO VICE-SINDACO
 - 4 UFFICIO (CULTURA/EVENTI)
 - 5 SALA CONFERENZE
 - 6 BAGNO
 - 7 DISIMPEGNO

- SUPERFICI:**
- 1) MQ 15.17
 - 2) MQ 19.68
 - 3) MQ 16.39
 - 4) MQ 15.12
 - 5) MQ 25.96
 - 6A) MQ 4.60
 - 6B) MQ 3.96
 - 7) MQ 7.86



VISTA N.1



VISTA N.2



VISTA N.3



VISTA N.4



VISTA N.5



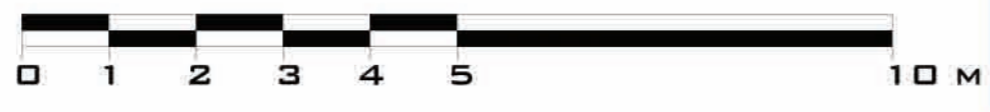
VISTA N.6

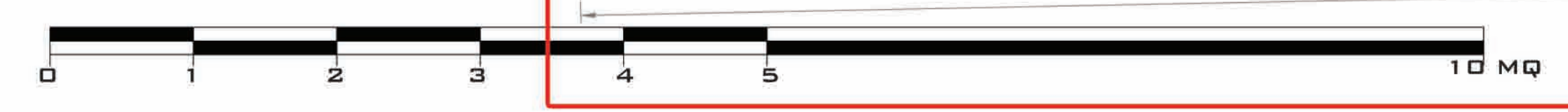
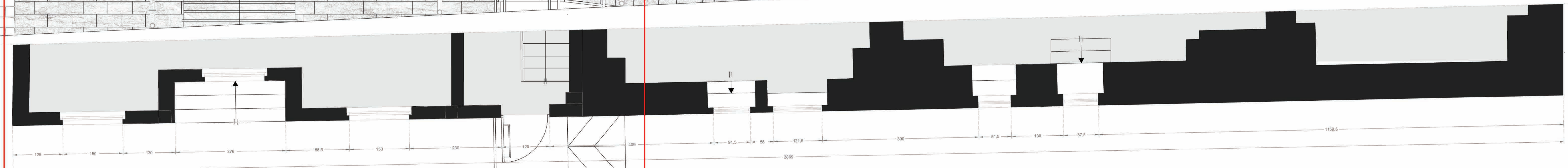
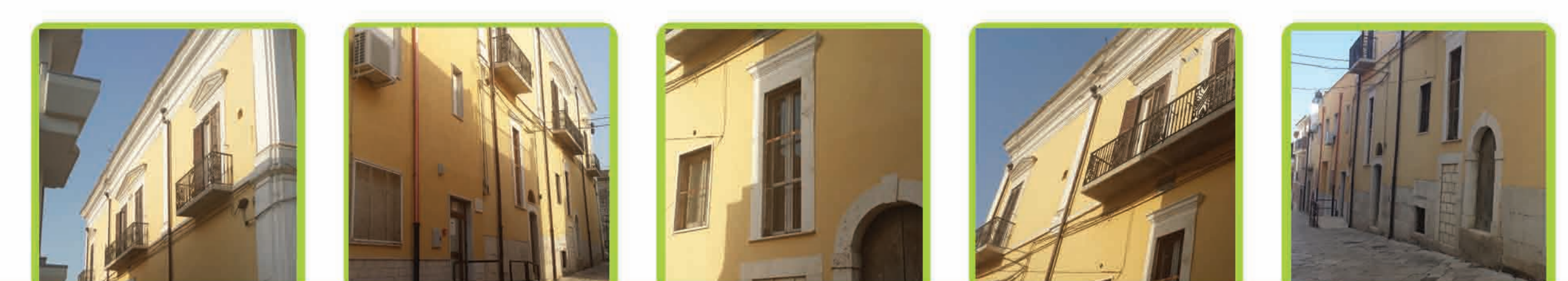


VISTA N.7



spazi sottoutilizzati de rivalizzare attraverso iniziative di innovazione sociale





IMMOBILE INTERESSATO